



THE SOFTWARE SUITE FOR THE STEEL INDUSTRY



Emiel ter Harmsel
Sales Manager



WHAT IS LOGICSTEEL?



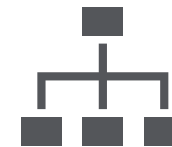
“We create high-end steel processing machines with integrated business software that automates and optimizes your production process – with the best customer service .”



“We help companies processing steel to boost throughput , cut waste , and hit delivery targets by replacing complex , manual and siloed systems with a fully integrated , intelligent production platform built specifically for steel.”



Software for steel processing companies



Part of Voortman:
Software + Machines
+ Service



Makes production smarter, faster, and more reliable



THE SOFTWARE SUITE FOR THE STEEL PROCESSING INDUSTRY



LogicSteel CAD/CAM
Boost your CAD to CAM process



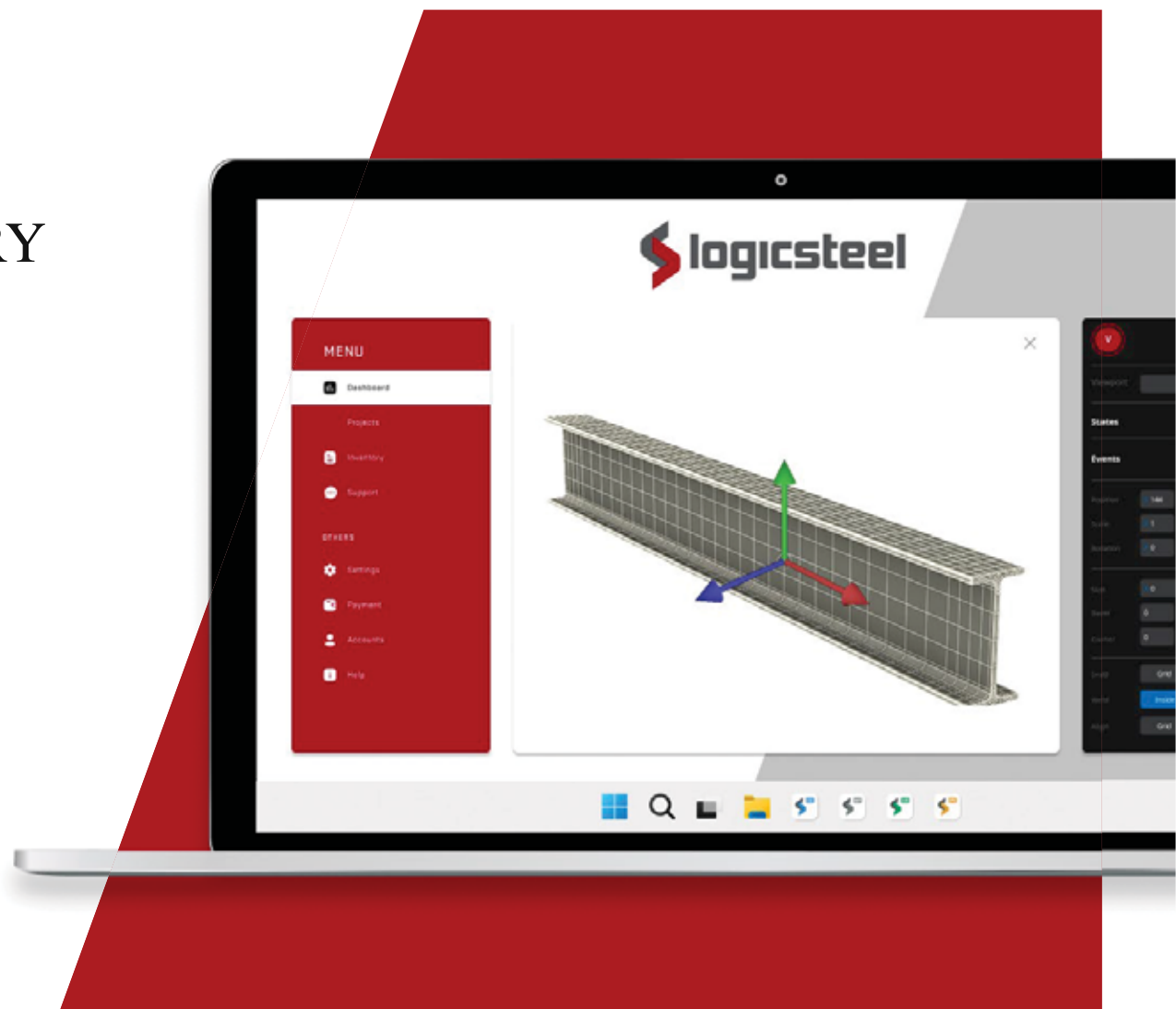
LogicSteel PRODUCTIVITY
Maximize machine performance



LogicSteel MRP
Take control of your factory



LogicSteel XR
Perform quality inspections at a glance

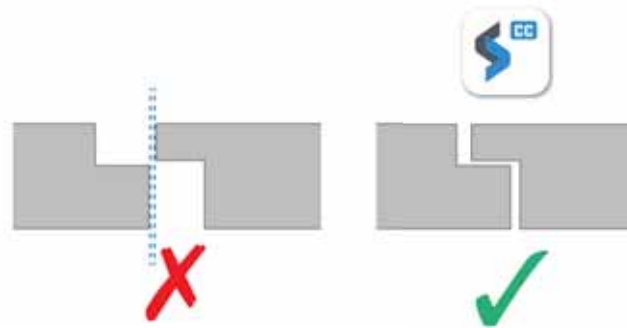


BEAM NESTING: UNIQUE ADVANTAGES



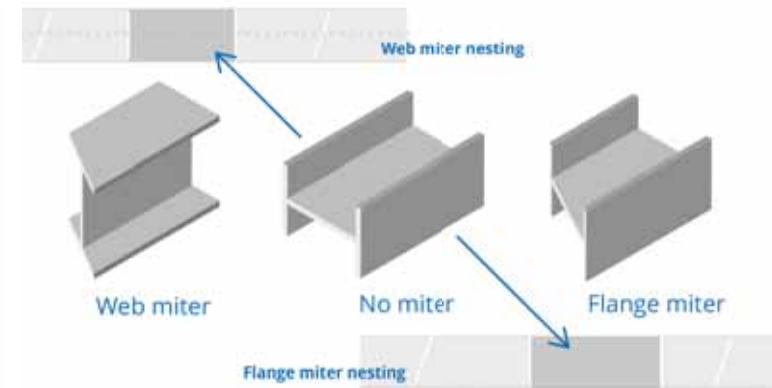
Machine-aware nesting

- ✓ Considers clamp zones, miters, etc.
- ✓ Save exactly the right space and nothing more



Contour nesting

- ✓ Interlocks shapes like puzzle pieces
- ✓ Reduces scrap far beyond block nesting



Web & flange miters

- ✓ Automatic splitting & correct sorting
- ✓ Eliminates manual prep, speeds workflows



THE SOFTWARE SUITE FOR THE STEEL PROCESSING INDUSTRY



LogicSteel CAD/CAM
Boost your CAD to CAM process



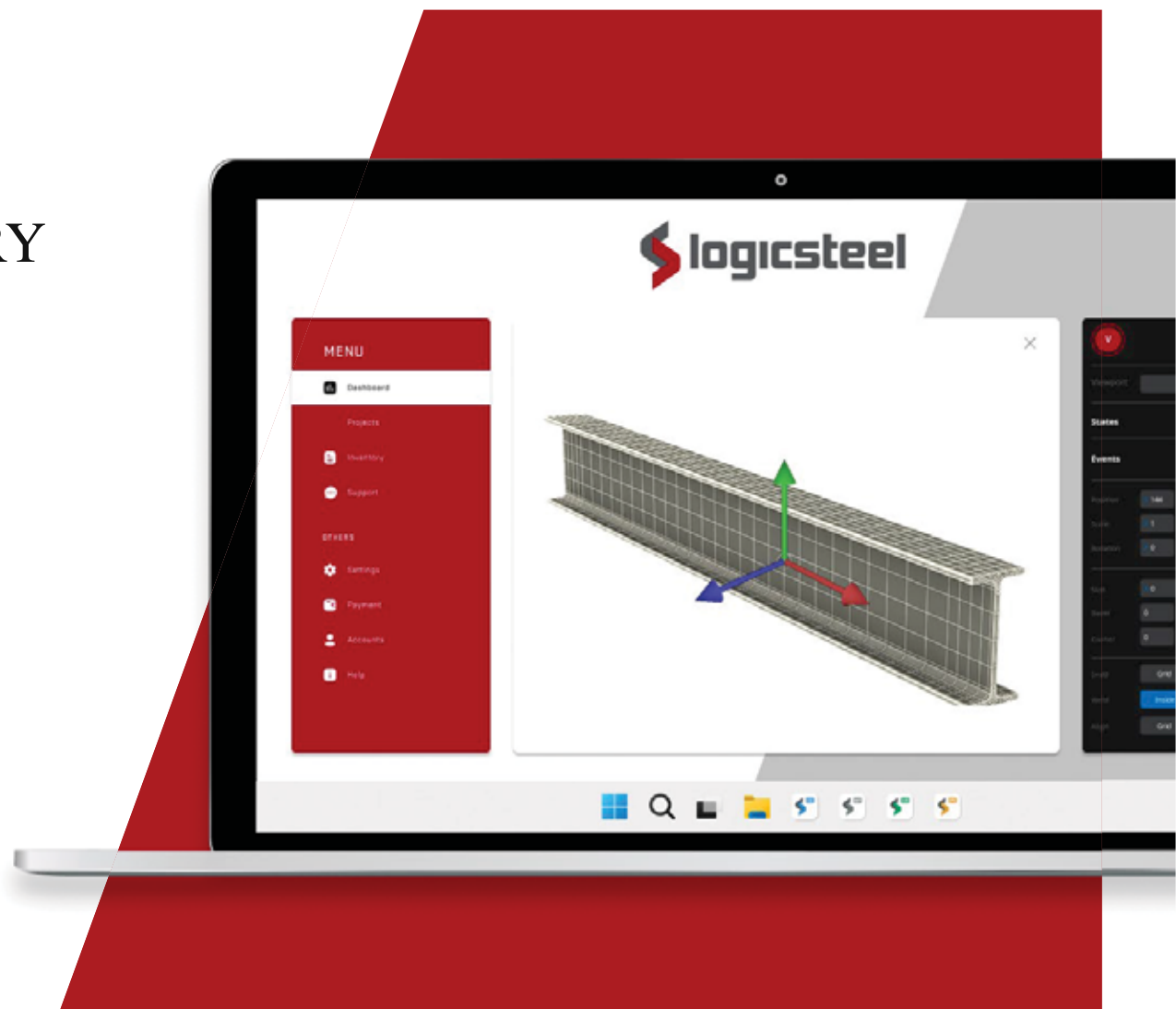
LogicSteel PRODUCTIVITY
Maximize machine performance



LogicSteel MRP
Take control of your factory



LogicSteel XR
Perform quality inspections at a glance



REMOTE MONITORING

STAY CONNECTED

Connect your Voortman machine to the cloud for secure, online access; anytime, anywhere.

BENEFITS

- ✓ Monitor production remotely
- ✓ From single machines to full production lines
- ✓ Live machine status and performance data
- ✓ Investigate down -time root causes





THE SOFTWARE SUITE FOR THE STEEL PROCESSING INDUSTRY



LogicSteel CAD/CAM
Boost your CAD to CAM process



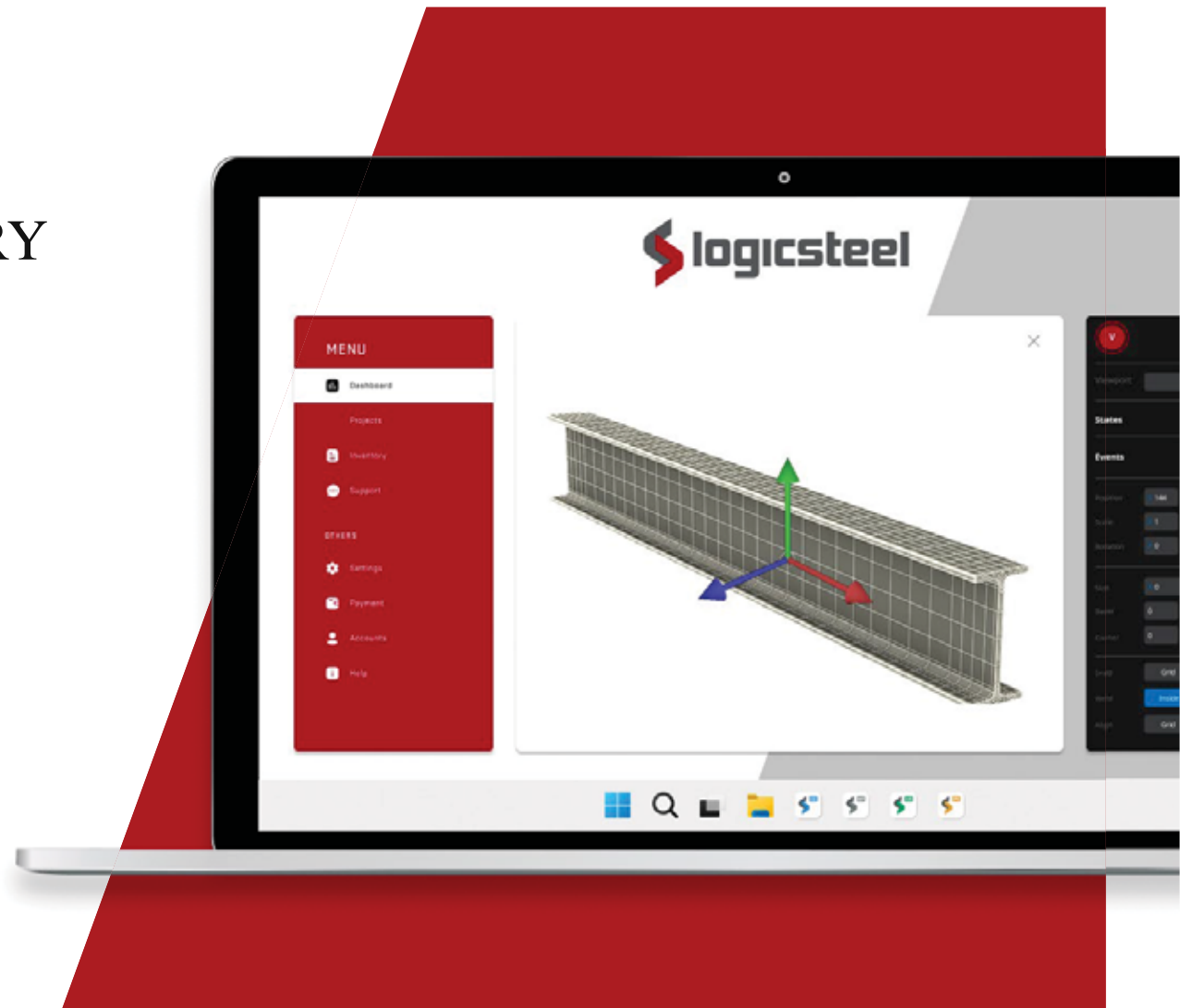
LogicSteel PRODUCTIVITY
Maximize machine performance



LogicSteel MRP
Take control of your factory

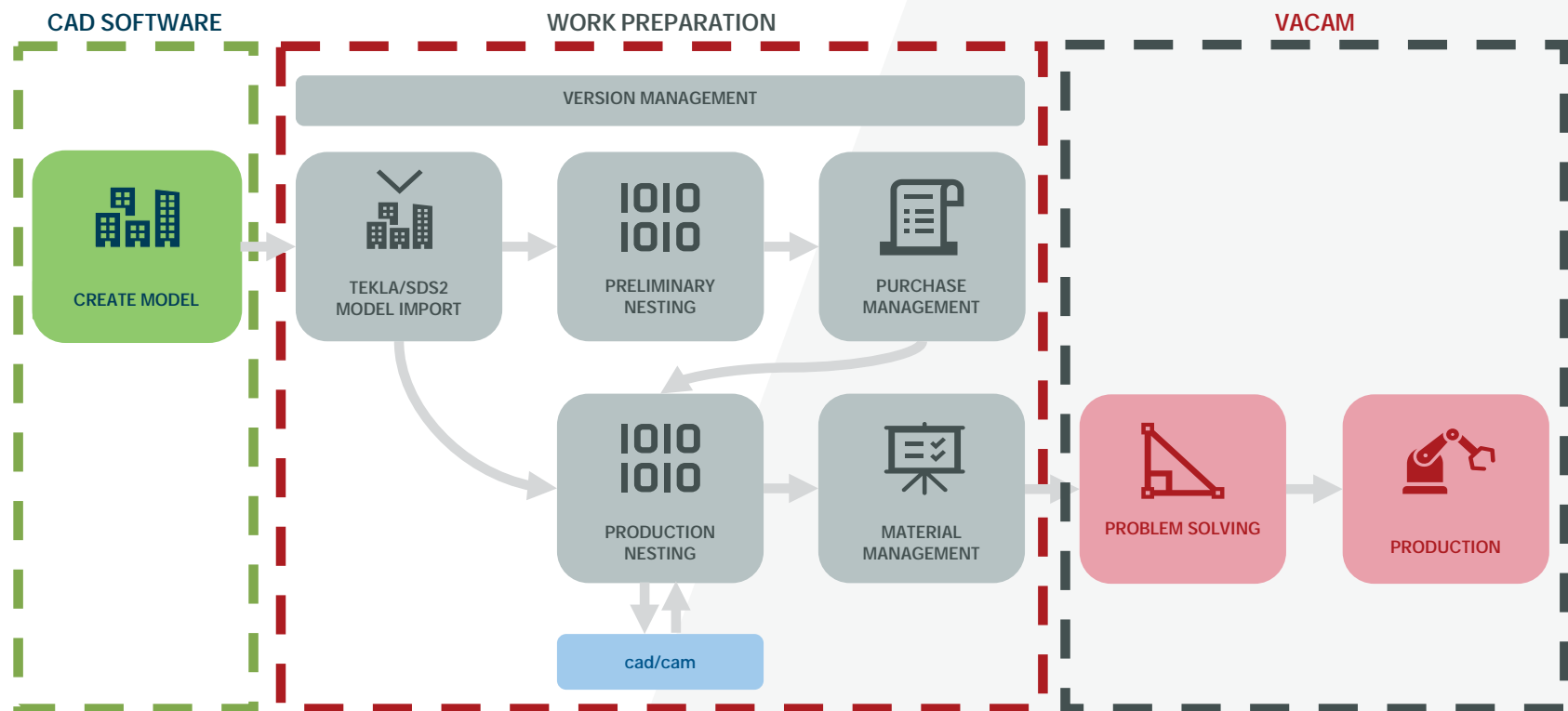


LogicSteel XR
Perform quality inspections at a glance



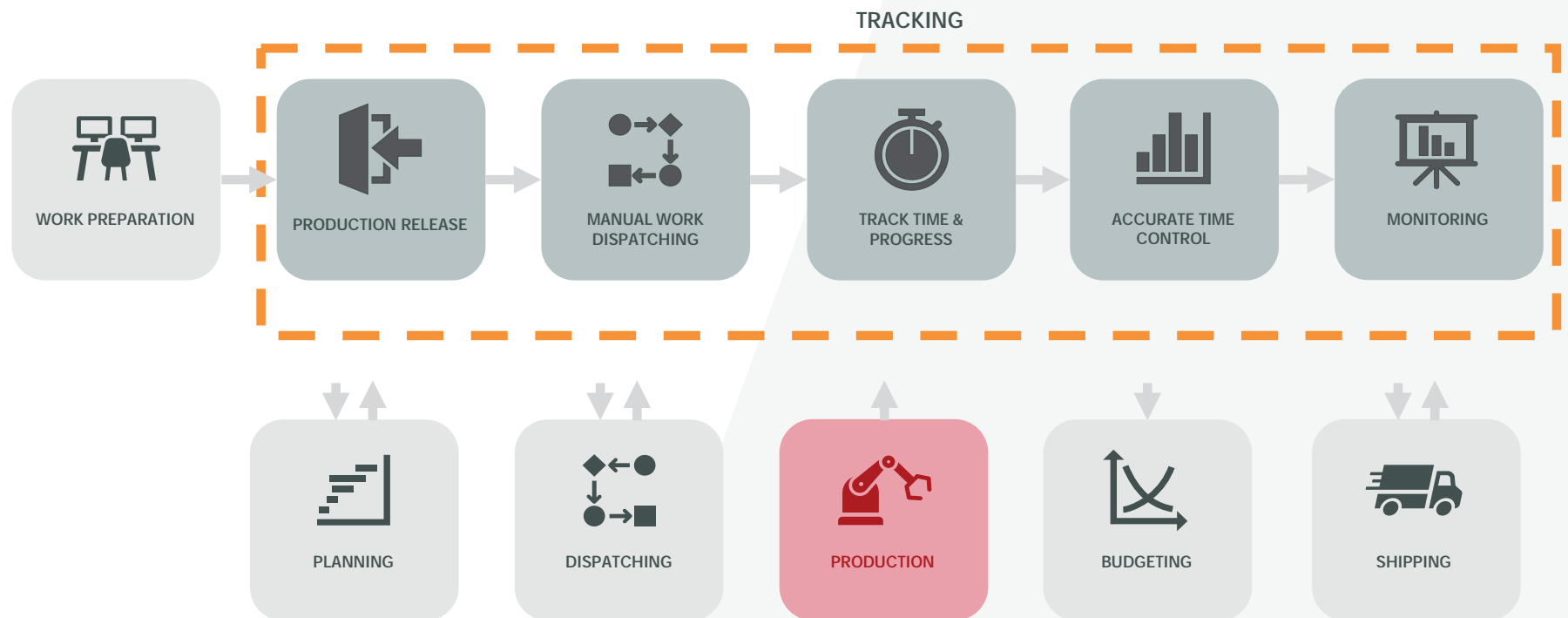


THE WORK PREP MODULE





THE TRACKING MODULE





THE SOFTWARE SUITE FOR THE STEEL PROCESSING INDUSTRY



LogicSteel CAD/CAM
Boost your CAD to CAM process



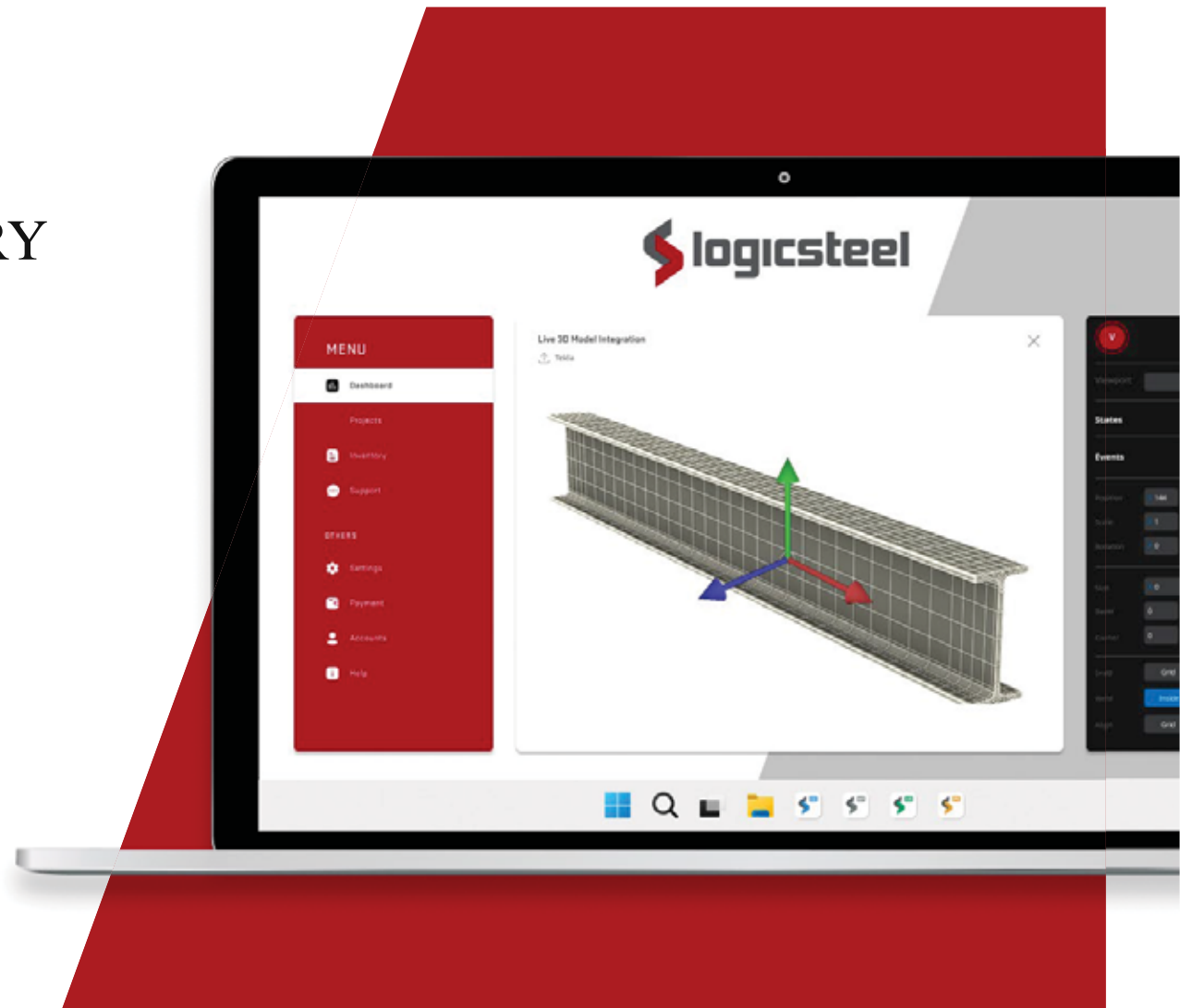
LogicSteel MRP
Take control of your factory



LogicSteel PRODUCTIVITY
Maximize machine performance



LogicSteel XR
Perform quality inspections at a glance










QUALITY CONTROL AT A GLANCE

LogicSteel XR transforms steel inspections by projecting 3D models directly onto assemblies: no 2D drawings, no manual measurements.

KEY FEATURES

-  3D Projection
-  Precise Overlays
-  Paperless Reporting
-  All-in-One Device
-  Precision at Scale

ROI

Customers
achieve full ROI
after preventing
only 3-5 mistakes



ONE CLOUD BASED SUITE

LogicSteel is a powerful, integrated software suite that stores your data securely in the cloud, eliminating silos and the need for costly servers.

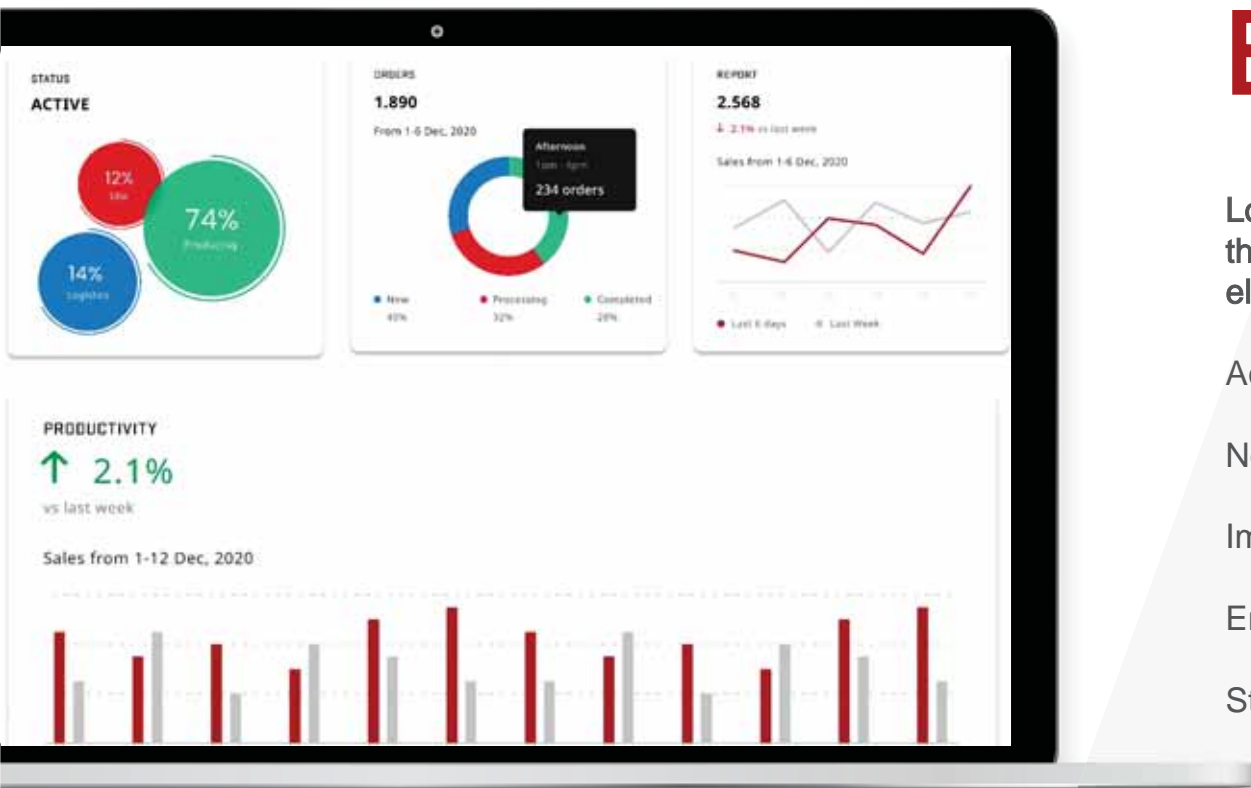
Access data anytime, anywhere

No need for expensive on-site servers

Improved collaboration with centralized data

Enhanced security and reliability

Streamlined workflows across teams and locations



ONLY PAY FOR IMPACT

💡 Unlimited Users

Everyone on board, all products, no limits

💛 Seamless Collaboration

Break barriers, automate workflows effortlessly

💰 Fair Pricing

Only pay for what delivers real value

📈 Scalable Growth

From small teams to enterprise, it adapts

🔧 Flexible Plans

Tools and pricing that match your needs





THE STEEL PROCESSING SOFTWARE SUITE

CADCAM | PRODUCTIVITY | MRP | XR

www.logicsteel.com